



ADDENDUM #1

RFP # 12-027

RFP for McInnish Irrigation Point of Connection Pump Project

August 1, 2012

The following changes/clarifications have been made to the specifications:

1. The bid due date and time remains the same for Thursday, August 9, 2012 11:00 AM
2. The removal of the previously listed backflow devices has been replaced with Reduced Pressure Zone (RPZ) assemblies. The RPZs will be supplied by the city and installed by the contractor. The new raw water connection will be made on the outlet side of the RPZ. This change will also allow use of the existing vault and will not require an additional vault at the connection point for fields 12-15 and will also eliminate the need for an air gap and the DI fittings at all connection points.
3. New Drawing and Maps have been provided
4. A replacement estimate of supplies has been provided; however it will be the vendor's responsibility for additional supplies and cost.

Estimated Equipment/Supplies (This is a partial list and the contractor is expected to supply subsidiary fittings to provide a working system)

- 1,280 feet of 6" PURPLE PVC Schedule 40 pipe
- 480 feet of 4" PURPLE PVC Schedule 40 pipe
- 1 – 48" w x 72" l x 36" h 20K load bearing vaults
- Misc. parts (711 heavy bodied glue, brackets, hardware, concrete, gravel, etc.)

*****THIS ADDENDUM SHOULD BE RETURNED WITH THE ORIGINAL BID *****

**Addendum 1 - RFP for McInnish Irrigation Point of Connection Pump Project
Proposal Pricing Sheet – Page 2 Continued**

Please provide pricing for the entire scope of work for the project: (prices must include the cost of bonding and insurance)

Days to Complete:

*****THIS ADDENDUM SHOULD BE RETURNED WITH THE ORIGINAL BID *****

PLEASE COMPLETE THE INFORMATION BELOW:

SIGNATURE

DATE

PRINTED NAME

TITLE

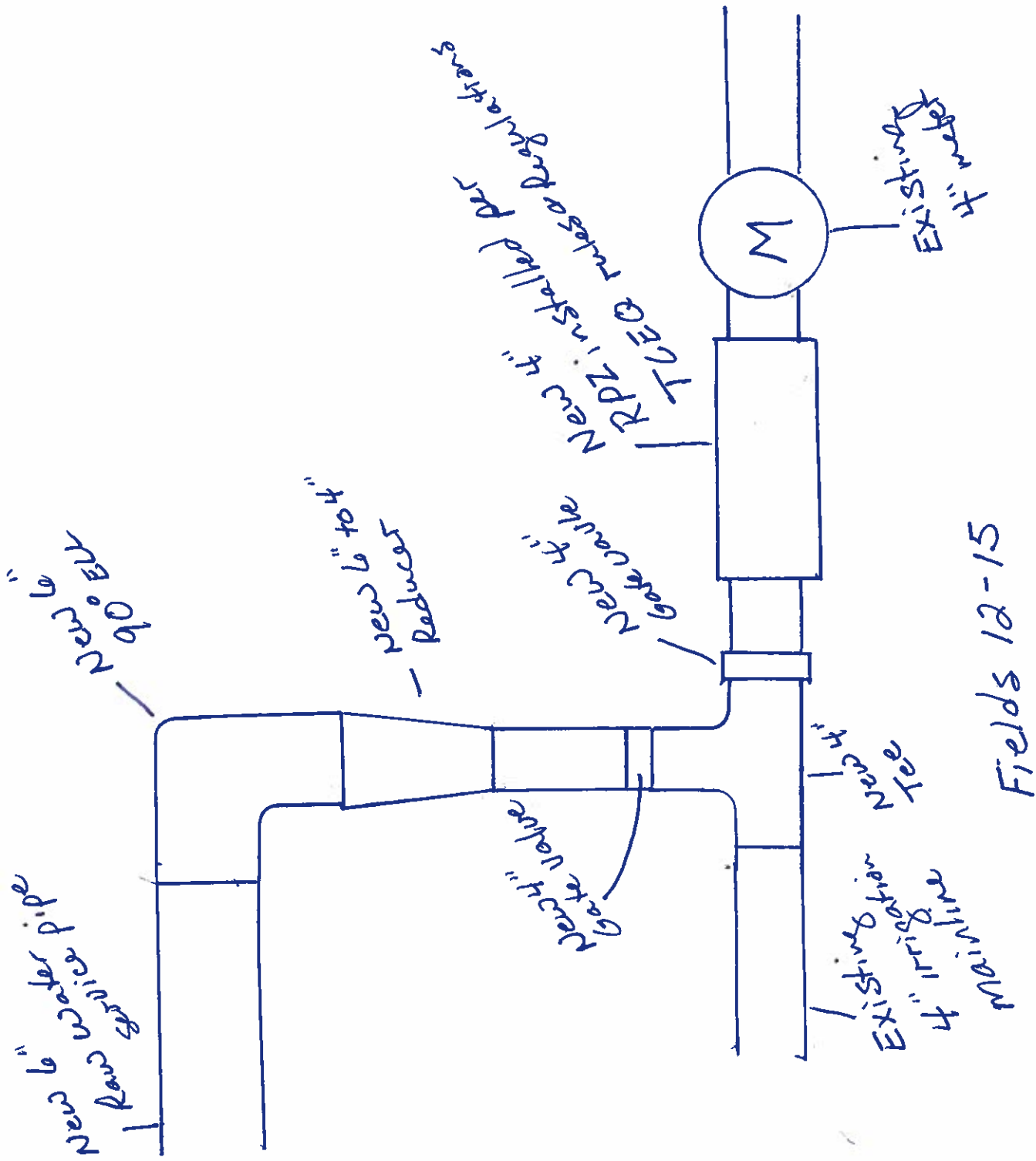
COMPANY

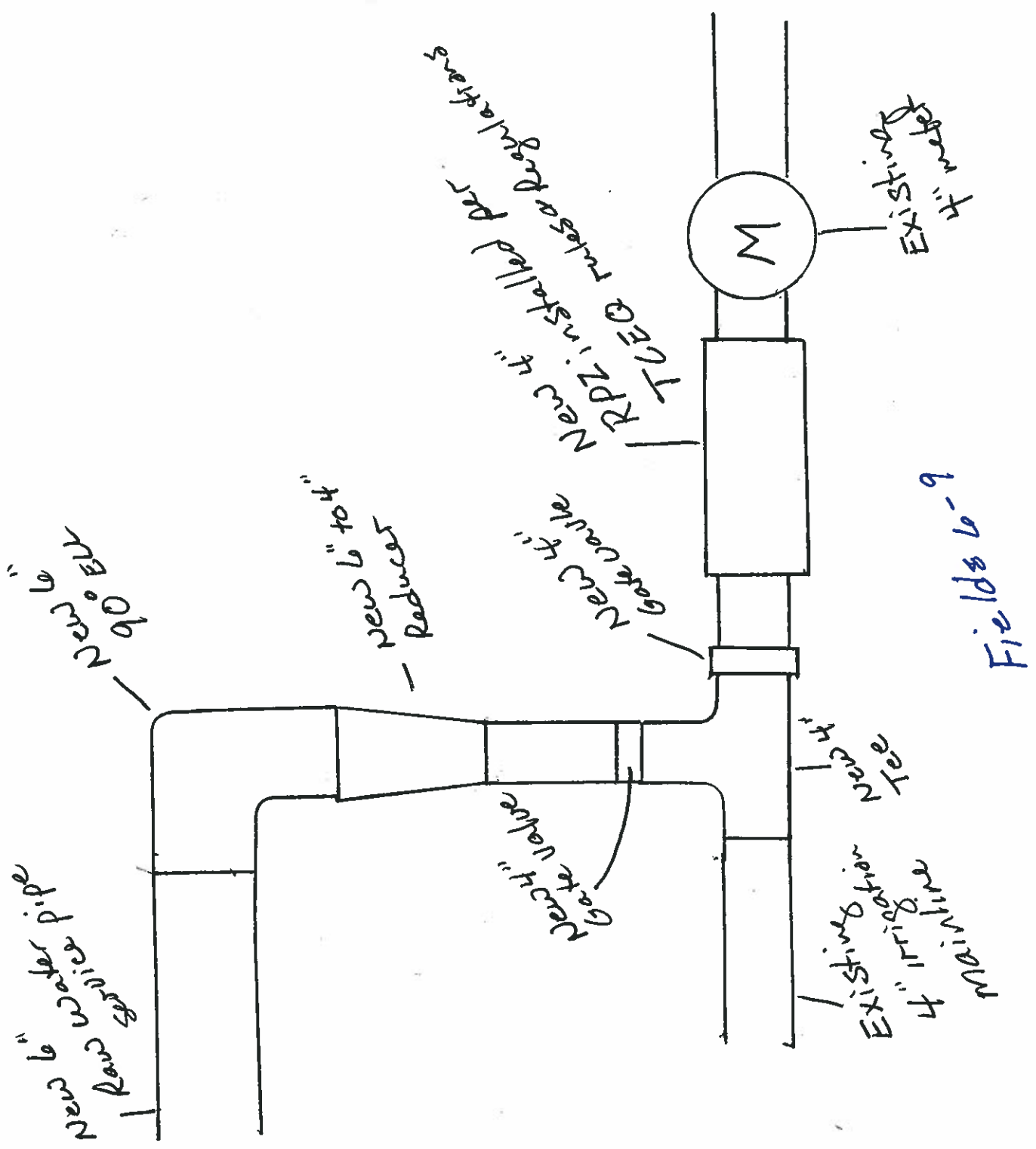
MAILING ADDRESS

PHONE NUMBER

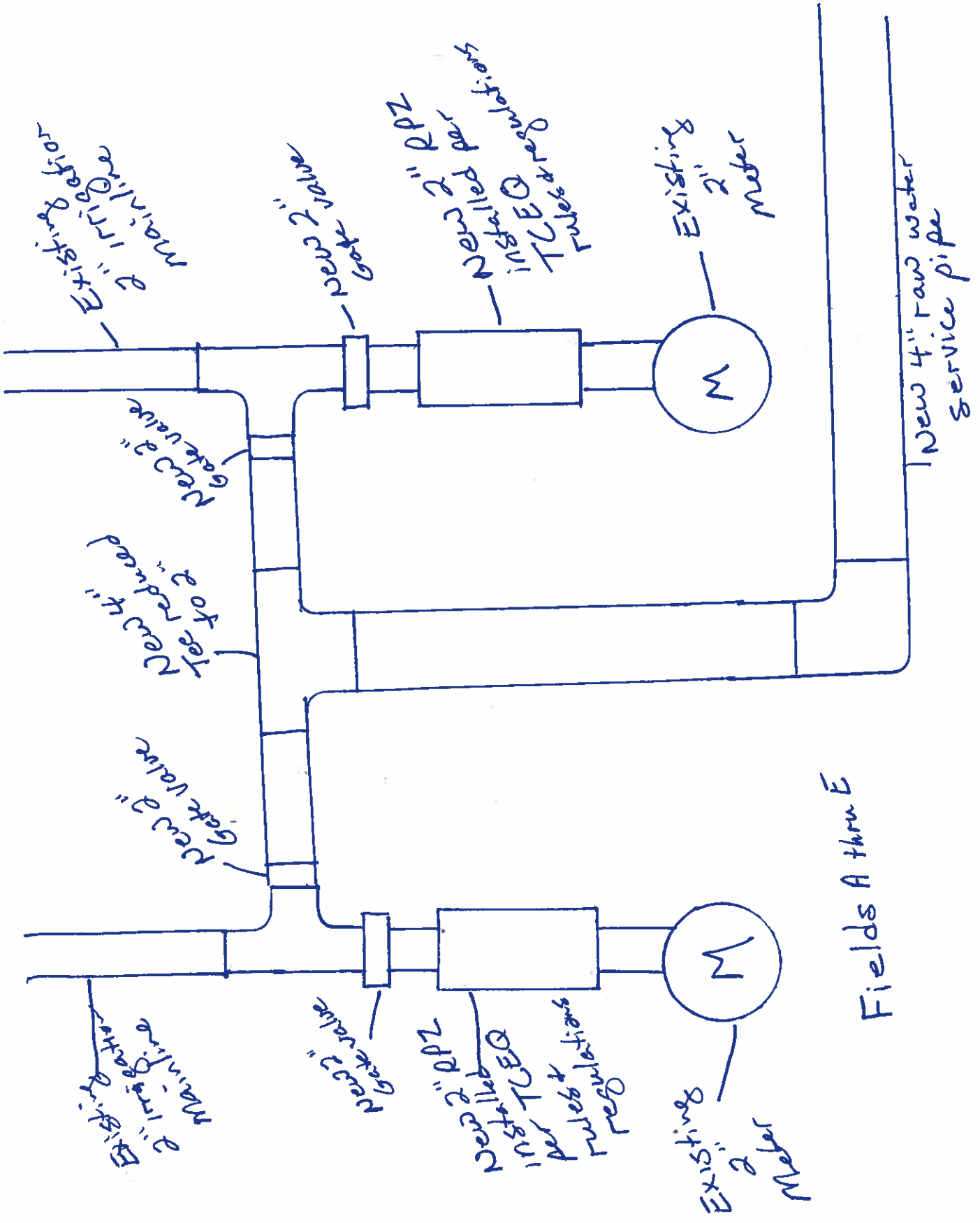
FAX NUMBER

E-MAIL ADDRESS





Fields 6-9



Fields A thru E

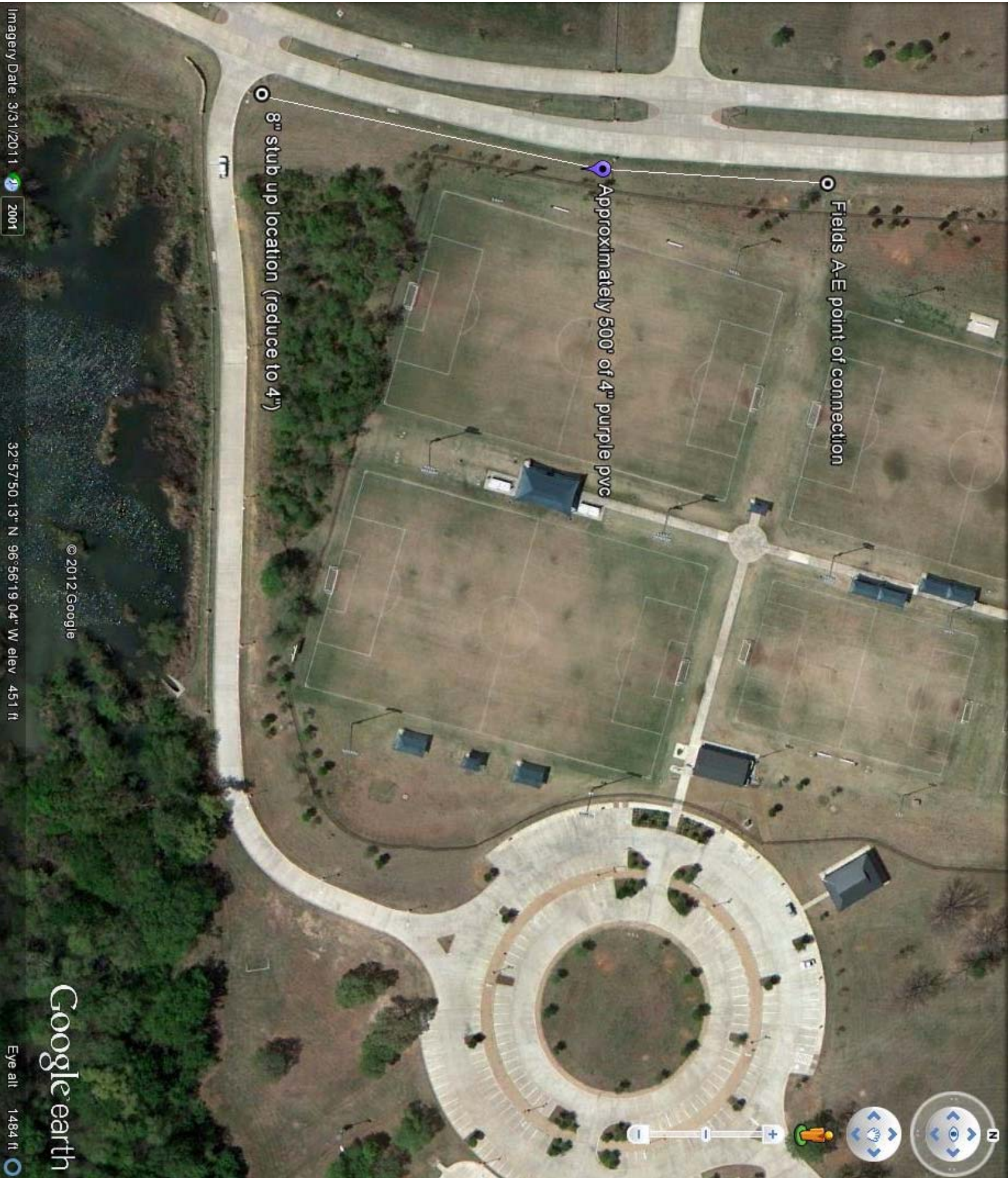
© 2012 Google

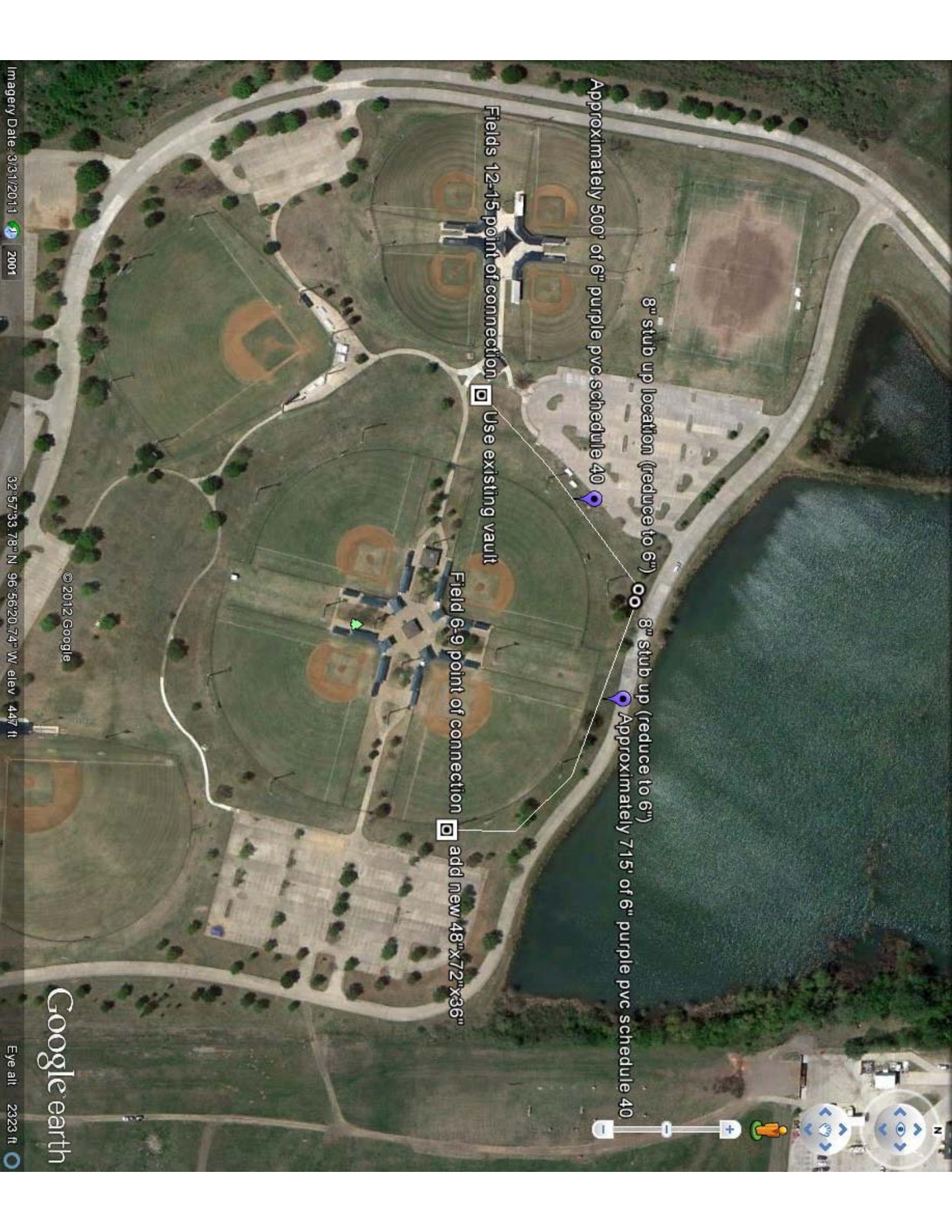
Google earth

Fields A-E point of connection

Approximately 500' of 4" purple pvc

8" stub up location (reduce to 4")





Approximately 500' of 6" purple pvc schedule 40

8" stub up location (reduce to 6")

8" stub up (reduce to 6")

Approximately 715' of 6" purple pvc schedule 40

Fields 12-15 point of connection

Field 6-9 point of connection

Use existing vault

add new 48"x72"x36"

© 2012 Google

Google earth

Imagery Date: 3/31/2011 2001

32°57'33.78" N 96°56'20.74" W elev 447 ft

Eye alt 2323 ft